

Typical Properties of EPOLENE® Polymers

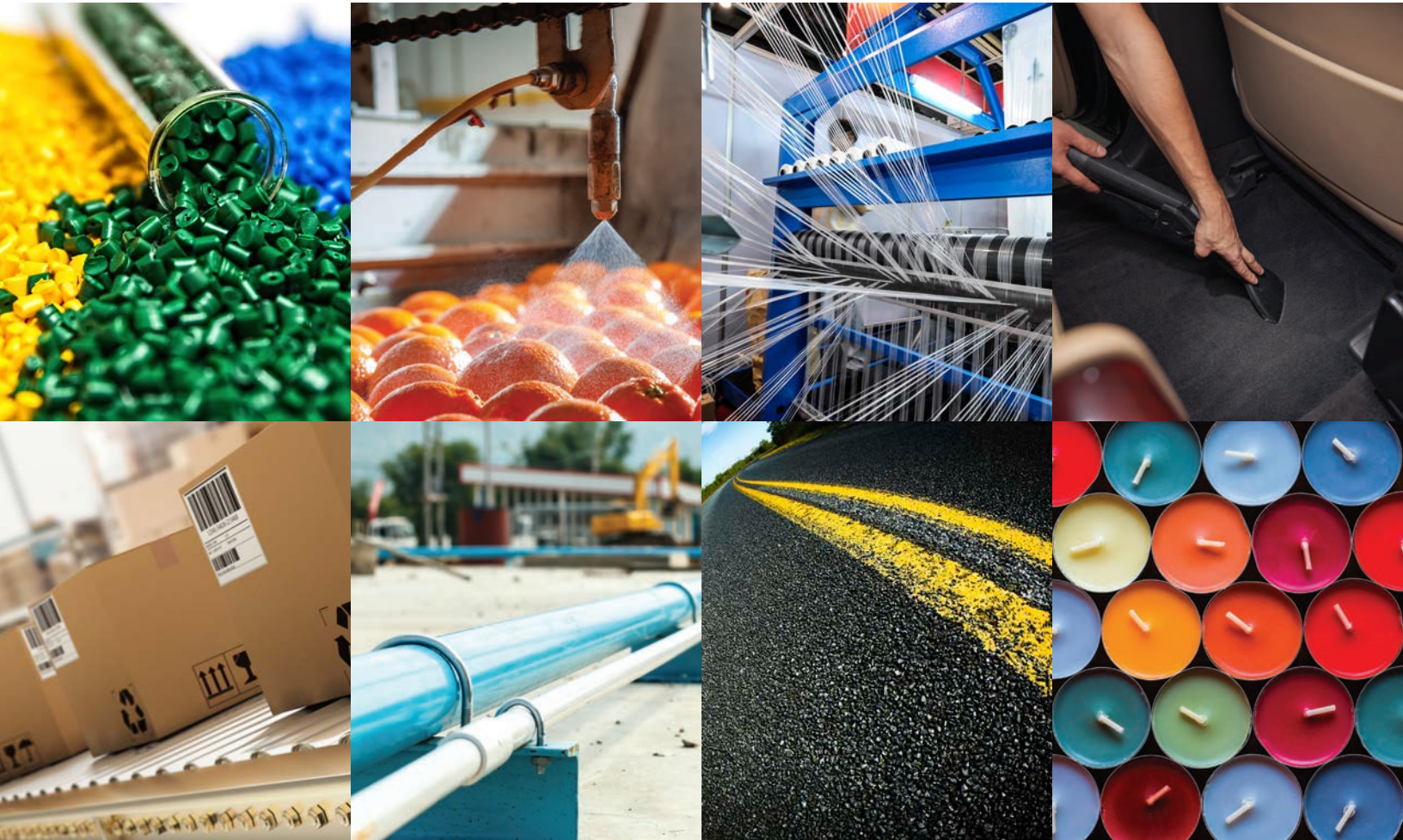
Product	Polymer Type	Drop Point °C	Penetration Hardness dmm	Density @ 25°C g/cm ³	Acid No.	Brookfield Thermosel Viscosity, cP				Melt Index 190°C	
						125°C (257°F)	140°C (284°F)	150°C (302°F)	190°C (374°F)		
	ASTM Method	(D-3954)	(D-1321)	(D-4883)	(D1386)			(D-3226)			
Coating Grade Highly Branched Medium Molecular Weight	C-10	PE	103	3	0.906		18,600	16,650	8,200	3,550	2,250
	C-12	PE	118	2	0.907		212,000	125,000	91,700	31,400	400
	C-13	PE	137	3	0.913		-	-	-	-	190
	C-15	PE	101	4	0.906		8,950	6,100	4,200	1,800	4,200
	C-17	PE	>133	2	0.917		- ^a				19
	C-23	PE	108	3	0.909		-	785,000	540,000	180,000	80
	C-24	PE			0.912						58
Coating Grade Functionalized with Maleic Anhydride	C-16	Ma-PE	103	3	0.908	2	16,650	10,000	8,100	2,850	1,700
	C-18	Ma-PE	101	4	0.905	2	7,750	5,000	4,100	1,550	4,200
	C-19	Ma-PE	101	4	0.903	5	10,360	6,335	4,740	1,750	-
	C-26	Ma-PE	133	<1	0.917	8	-	-	-	-	8
	C-29	Ma-PE	105	3	0.915	4	760	-	-	-	-
Non- Emulsifiable Low Molecular Weight	N-10	PE	110	2	0.925		1,500	1,100	-	-	-
	N-11	PE	111	2	0.921		350	250	-	-	-
	N-14	PE	108	3	0.920		150	100	-	-	-
	N-15	PP	164	<1	0.902		- ^a	- ^a	- ^a	700	-
	N-21	PE	121	<1	0.950		600	400	350	-	-
	N-30	PE	110	2	0.924		1,050	700	-	-	-
	N-34	PE	104	5	0.910		450	300	-	-	-
	N-35	PE	104	3	0.913		700	-	-	-	-
Emulsifiable Oxidized Low Molecular Weight	EE-2	Ox-PE	112	<1	0.960	17	1,500	900	-	-	-
	E-10	Ox-PE	105	2	0.942	17	800	525	-	-	-
	E-14	Ox-PE	104	4	0.939	17	375	260	-	-	-
	E-14E	Ox-PE	104	4	0.939	17	225	160	-	-	-
	E-16	Ox-PE	105	4	0.943	17	700	500	-	-	-
	E-20	Ox-PE	112	<1	0.960	17	1,500	900	-	-	-
Chemically Modified PP	E-43	Ma-PP	160	<1	0.934	45	- ^a	- ^a	- ^a	300	-

Typical properties are reported for information only. These figures are average values for typical production material and should not be construed as specifications.

^a Solid at this temperature

EPOLENE®

SPECIALTY POLYMER WAXES



Westlake Polyethylene™

Enhancing your life every day®

Contact us today to learn more about our products and capabilities, or schedule a visit to our Customer Solutions Center.

Westlake Polymers LLC

2801 Post Oak Boulevard, Suite 600
Houston, Texas 77056
1.800.545.9577

Get connected:



[Westlake.com](https://www.westlake.com)

The information presented in this brochure is made available solely for general information purposes. Westlake Polymers does not warrant the accuracy, completeness, or usefulness of this information. Any reliance the user places on such information is strictly at the user's own risk.

ELEVATE®, EPOLENE®, ENERGX®, EMAC®, EMAC+®, EBAC®, EBAC+®, HIFOR®, HIFOR Clear®, HIFOR Xtreme®, MXSTEN®, PIVOTAL®, STEP UP®, TRUCOAT®, TYMAX® and Westlake are trademarks of Westlake Polymers. All Westlake Polymers' products are sold pursuant to Westlake Polymers' standard terms and conditions of sales which are available upon request and Westlake Polymers makes no other warranties either expressed or implied, including but not limited to the warranties of merchantability and fitness for particular purpose.

© 2023 Westlake Polymers LLC | Publication Date: February 2023 | EXT-EPO-Properties-02.23-Rev.2



Printed using
recycled paper